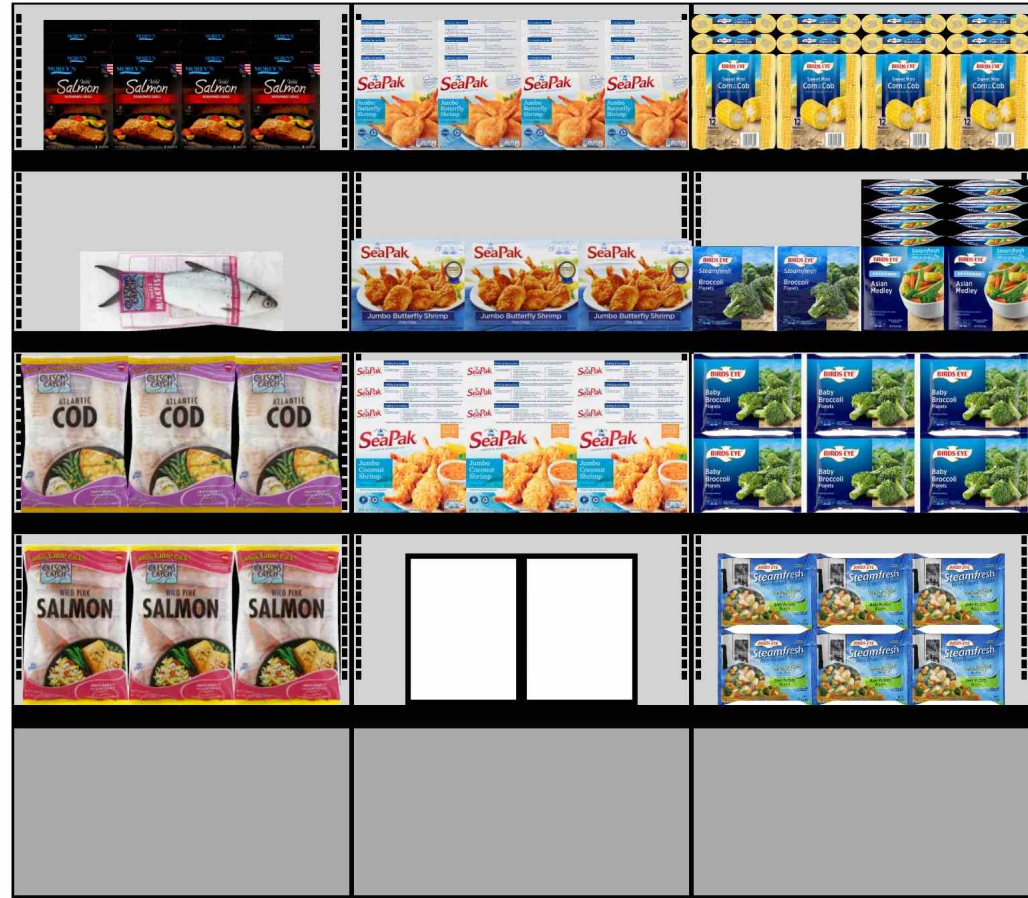


DP 11
DISPLAY DATES 05/29/2023-06/04/2023

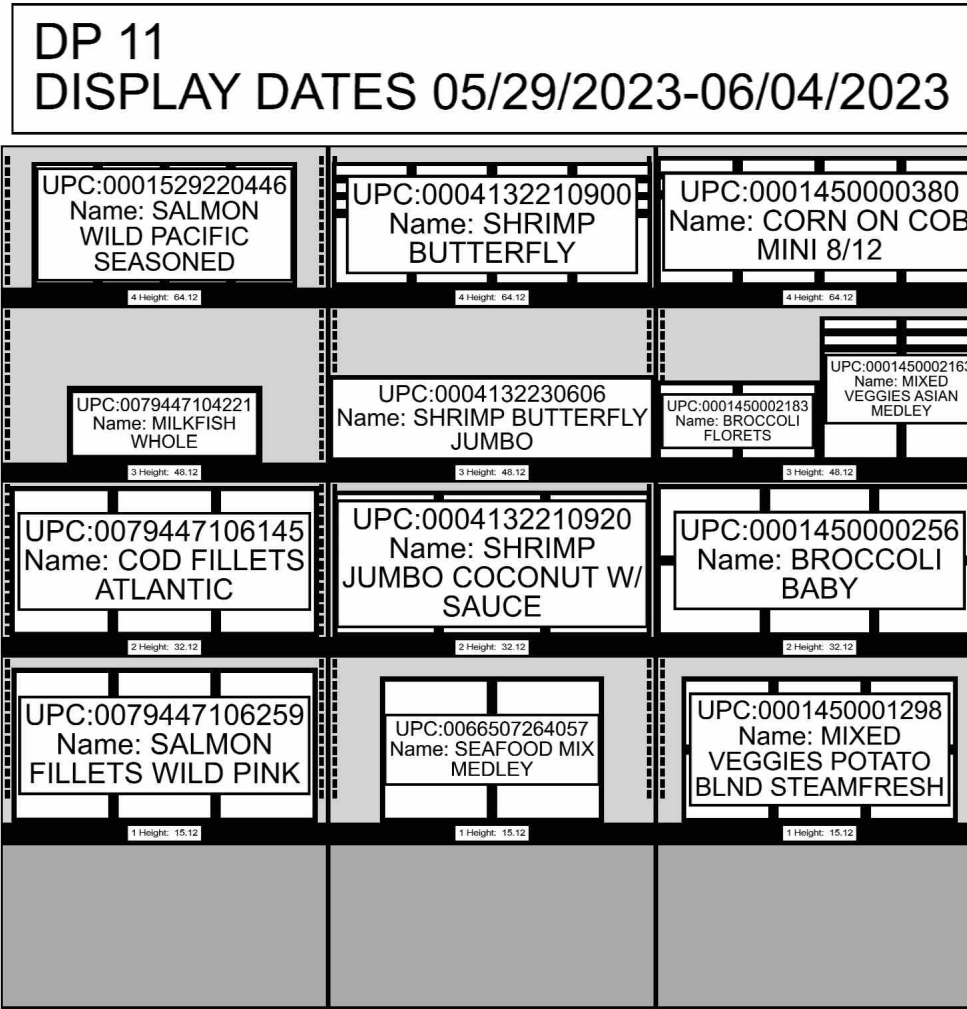


LEFT-RIGHT

HQ DECA PLANOGRAM APPROVED BY CATEGORY MANAGER, STABLES, JESSICA AND MERCHANDISING SPECIALIST, GALVIN, KIM,POG
ISSUES/CONCERNS POC:DECAHQMP@DECA.MIL

12/28/2022

CAO MUST BE INVOLVED IN THE PROCESS ALONG WITH STORE MANAGEMENT APPROVAL. ITEM POSITIONS MUST NOT BE CHANGED
AT ANY TIME.



LEFT-RIGHT

HQ DECA PLANOGRAM APPROVED BY CATEGORY MANAGER, STABLES, JESSICA AND MERCHANDISING SPECIALIST, GALVIN, KIM, POG ISSUES/CONCERNS POC: DECAHQMP@DECA.MIL

12/28/2022

CAO MUST BE INVOLVED IN THE PROCESS ALONG WITH STORE MANAGEMENT. ITEM POSITIONS MUST NOT BE CHANGED AT ANY TIME.

Bay	Shelf	Loc ID	UPC	Brand	Description	Size	UOM	NOF	Product Status	R S L	CS/PK	COS	Packout	Height	Width	Depth	Add Date
1	1	1	0079447106259	COLESONSCA	SALMON FILLETS WILD PINK	32.00	OZ	3	Active	K1	15	2.4	36	14.2	9.35	1.8	1/29/2013
2	1	1	0066507264057	PANAMEISEA	SEAFOOD MIX MEDLEY	3.00	LB	2	Active	K2	8	1.25	10	13.4	10.25	4	3/4/2019
3	1	1	0001450001298	BIRDSEYE	MIXED VEGGIES POTATO BLND STEAMFRESH	10.00	OZ	3	Active	K1	10	6.6	66	6.7	8.45	1.85	8/14/2008
1	2	2	0079447106145	COLESONSCA	COD FILLETS ATLANTIC	32.00	OZ	3	Active	K1	15	2	30	13.85	9.45	2.15	1/29/2013
2	2	2	0004132210920	SEAPAK	SHRIMP JUMBO COCONUT W/SAUCE	18.00	OZ	3	Active	K1	8	6.375	51	7.79	9.75	1.87	5/23/2013
3	2	2	0001450000256	BIRDSEYE	BROCCOLI BABY	12.60	OZ	3	Active	K1	12	6.5	78	7	10	1.6	9/28/1991
1	3	3	0079447104221	COLESONSCA	MILKFISH WHOLE	22.80	OZ	1	Active	K1	27	0.037	1	17.9	7	1.95	11/19/2001
2	3	3	0004132230606	SEAPAK	SHRIMP BUTTERFLY JUMBO	32.00	OZ	3	Active	K2	6	0.5	3	8	10	2.75	6/30/2010
3	3	3	0001450002183	BIRDSEYE	BROCCOLI FLORETS	10.80	OZ	2	Active	K1	6	0.333	2	7.5	7.5	2.44	8/16/2016
3	3	4	0001450002163	BIRDSEYE	MIXED VEGGIES ASIAN MEDLEY	10.80	OZ	2	Active	K1	6	7.333	44	7.5	7.5	1.47	7/12/2016
1	4	4	0001529220446	MOREYS	SALMON WILD PACIFIC SEASONED	10.00	OZ	4	Active	K2	8	7.5	60	7.6	6.09	1.95	4/17/2012
2	4	4	0004132210900	SEAPAK	SHRIMP BUTTERFLY	9.00	OZ	4	Active	K1	10	9.2	92	6.82	7.35	1.55	9/28/1991
3	4	5	0001450000380	BIRDSEYE	CORN ON COB MINI 8/12	12.00	CT	4	Active	K1	8	8	64	8.5	7.5	1.75	9/28/1991